



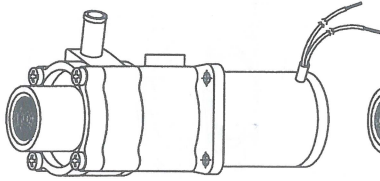
MARCH PUMPS

1819 PICKWICK AVE., GLENVIEW, IL 60026-1306, U.S.A
 PHONE: (847) 729-5300 - FAX: (847) 729-7062
 WWW.MARCHPUMP.COM

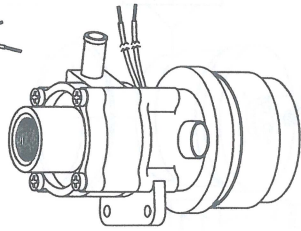
893

12 & 24 VDC

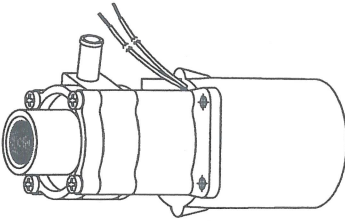
(893-03),(893-05)
 NONSUBMERSIBLE
 BRUSH MOTOR



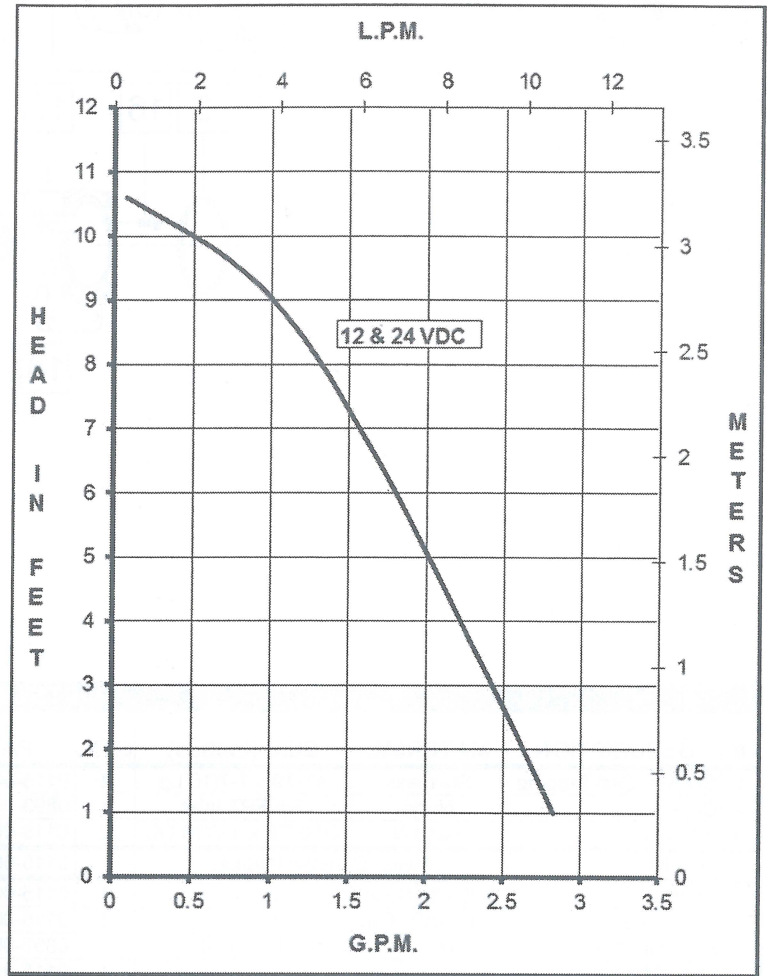
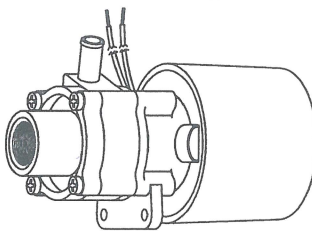
(893-07),(893-08)
 NONSUBMERSIBLE
 BRUSHLESS MOTOR



(893-04),(893-06)
 SUBMERSIBLE
 BRUSH MOTOR



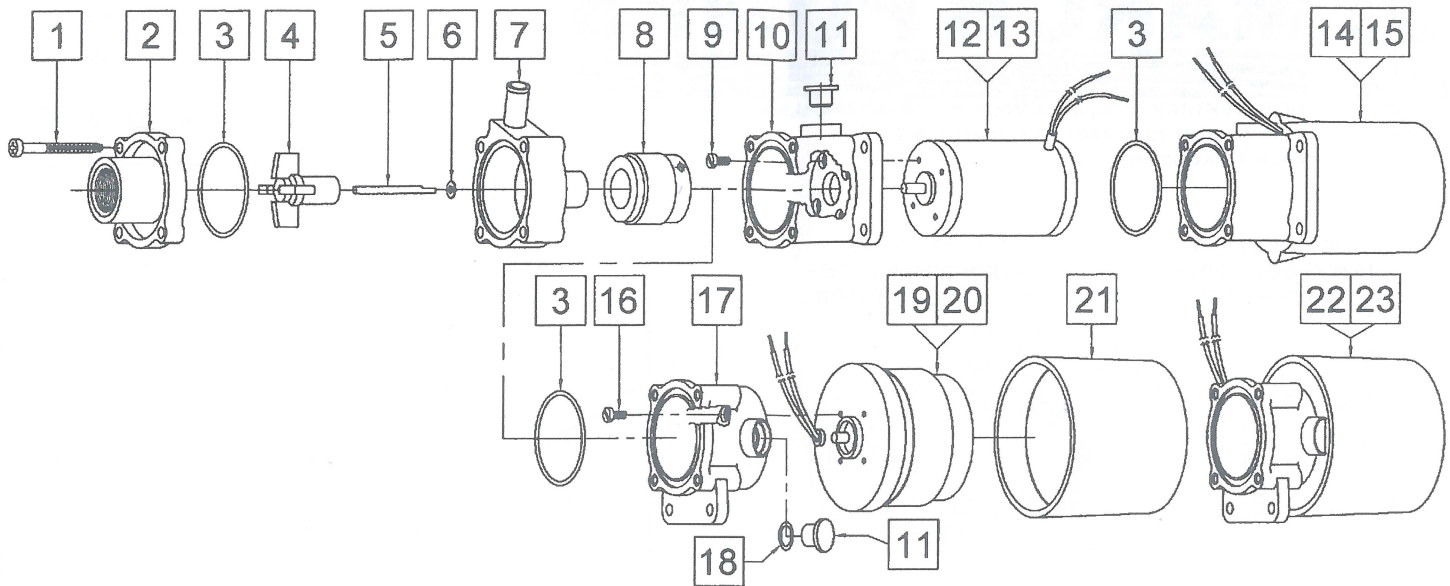
(893-09),(893-10)
 SUBMERSIBLE OR
 NONSUBMERSIBLE
 BRUSHLESS MOTOR



DESCRIPTION & OPERATION:

Series 893 are centrifugal magnetic drive pumps, eliminating the need for a shaft seal. Pumps can be serviced with a screwdriver. See the parts list for a breakdown of parts. Pumps are not self-priming, lack a suction lift, and thus require a **flooded suction**. Pumps **cannot be run dry** because the impeller requires the liquid being pumped for lubrication. Brushless motors must be operated within a restricted voltage range due to the electronics in the motor. For application assistance, contact March Pump.

SPECIFICATIONS	893-03	893-04	893-05	893-06	893-07	893-08	893-09	893-10
Max Flow	2.7 gpm - 11 lpm				2.7 gpm - 11 lpm			
Max Head	10.6 ft / 4.5 psi - 3.3 m				10.6 ft / 4.5 psi - 3.3 m			
Inlet - Outlet	3/8" FPT - 3/8" OD				3/8" FPT - 3/8" OD			
Max Internal Pressure	50 psi - 3.4 bar				50 psi - 3.4 bar			
Max Liquid Temperature	190°F open air 87°C open air	160°F sub 71°C sub	190°F open air 87°C open air	160°F sub 71°C sub	190°F open air 87°C open air		190°F open air, 130°F sub 87°C open air, 54°C sub	
Motor Type	DC Brush Motor				DC Brushless Motor			
Restricted Voltage Range	12V 24V				7V to 14V 12V to 28V			
Watts - Amps	12V 24V		12 - 1		12 - 1		12 - 1	
Hp (Kw) - Rpm	1/150 (0.004) - 4000				1/150 (0.004) - 4000			
Electrical Connection	20" (50 cm) Leads - Red Lead is Positive / Blue Negative				16" (40 cm) Leads - Red Lead is Positive / Blue Negative			
Models	893-03 & 893-05		893-04 & 893-06		893-07 & 893-08		893-09 & 893-10	
Overall Pump Size (H x W x L)	Inches 2.52 x 2.19 x 5.01		Inches 2.79 x 2.66 x 5.11		Inches 2.96 x 2.25 x 4.28		Inches 2.96 x 2.45 x 4.46	
	cm 6.4 x 5.5 x 12.7		cm 7.0 x 6.7 x 12.9		cm 7.5 x 5.7 x 10.8		cm 7.5 x 6.2 x 11.3	
Packed Weight	1.0 lbs / 0.45 kg		1.2 lbs / 0.54 kg		1.0 lbs / 0.45 kg		1.2 lbs / 0.54 kg	
Materials in Contact With Solution	Noryl, Nylon, Carbon/Teflon, Buna N, 316 Stainless Steel, Ceramic Magnet. When pump is submerged the following additional materials are in contact: Epoxy, Delrin, & Motor Leads							
All specifications & data are based on pumping water & are intended as a guideline only. Specifications may vary with different motors.								



PARTS LIST

#	DESCRIPTION	MATERIAL	SIZE (Inches)	QTY.	PART #	Brush				Brushless			
						893-03	893-04	893-05	893-06	893-07	893-08	893-09	893-10
1	Screws, Self-Tapping	Stainless	#7-19 x 1-7/16 Lg	4	0115-0062-1000	S	S	S	S	S	S	S	S
2	Cover	Noryl	3/8 FPT Inlet	1	0893-0004-1000	S	S	S	S	S	S	S	S
3	"O" Ring	Buna N	1/16 CS x 1-7/16 OD	2	0115-0018-1000	A	S	A	S	S	S	S	S
4	Impeller	Nylon/Ceramic Magnet		1	0115-0008-0100	S	S	S	S	S	S	S	S
5	Shaft	316 Stainless		1	0115-0032-1000	S	S	S	S	S	S	S	S
6	Thrust Washer (Rear)	Carbon/Teflon		1	0115-0033-1000	S	S	S	S	S	S	S	S
7	Rear Housing	Noryl	3/8 OD Outlet	1	0893-0003-1000	S	S	S	S	S	S	S	S
8	Drive Magnet			1	0115-0101-0100	S	S	S	S	S	S	S	S
9	Screws	Stainless	#4-40 x 1/4 Lg	4	0893-0016-1000	S		S					
10	Motor Bracket	Plastic		1	0893-0002-1000	S		S					
11	Plug	Plastic		1	0125-0110-1000	S		S		S	S		
12	Motor 12VDC Brush			1	0893-0001-1000	S	S						
13	Motor 24VDC Brush			1	0893-0022-1000			S	S				
14	Encapsulated Assy. 12VDC Brush			n/a	Not Available	S	S						
15	Encapsulated Assy. 24VDC Brush			n/a	Not Available			S	S				
16	Screws	Stainless	0.118 x 0.5 x 0.236 Lg	4	0893-0029-1000					S	S		
17	Motor Bracket	Plastic		1	0893-0035-0000					S	S		
18	"O" Ring	Viton	1/16 CS x 7/16 OD	1	0210-0008-1000					S	S		
19	Motor 12VDC Brushless			1	0893-0026-1000					S		S	
20	Motor 24VDC Brushless			1	0893-0027-1000						S		S
21	Motor Cap	Plastic		1	0893-0036-1000					O	O		
22	Submersible Assy. 12VDC Brushless			n/a	Not Available							S	S
23	Submersible Assy. 24VDC Brushless			n/a	Not Available							S	S

NOTE: Contact Factory for other materials and/or parts not listed.

Legend: S = Standard, O = Optional, A = Only one required

LIMITED WARRANTY:

March pumps are warranted to the original user against defects in workmanship and materials under normal use with room temperature water. The brush type motors used on 03, 04, 05 & 06 have a rated brush life of 2,800 hours. They are warranted for 2,800 hours or 12 months, whichever comes first. The brushless motors used on 07, 08, 09, & 10 have a rated life of 50,000 hours and are warranted for 18 months from date of manufacture. For the complete warranty and to register online go to www.marchpump.com/warranty-registration